

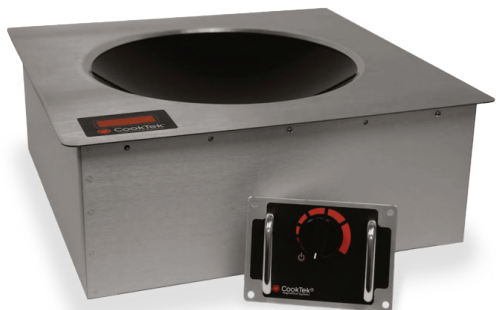


Project \_\_\_\_\_

Item No. \_\_\_\_\_

Quantity \_\_\_\_\_

## DROP-IN INDUCTION WOK with Standard Controls



### FEATURES

- Models available in 1800 (U.S. only), 2500, 3000, 3500 watts
- Drop-in design with stainless steel top and aluminum housing
- High-quality internal electronics and heavy gauge Litz wire
- Easy-to-clean high temperature glass-ceramic wok bowl
- Automatic pan detection allows for instant energy transmission to pan
- LED display for precise user feedback
- Programmed with 20 power cook settings
- Automatic shut-off feature prohibits overheating
- Microprocessor monitors vital components to check for overheating, power supply issues, and more
- Integral fan keeps internal components cool
- Available in 100-120 VAC or 200-240 VAC, single phase
- Includes plug and cord (6 ft. nominal)
- Two-year advanced replacement warranty – U.S. and Canada

### PERFORMANCE

The CookTek® Drop-in Induction Wok with Standard Controls boasts a drop-in countertop design with a stainless steel top, aluminum housing, and a recessed glass-ceramic wok bowl intended for commercial kitchens and restaurants. An automatic shut-off feature, integral cooling fan, and self-diagnosing microprocessor allow for a safe kitchen environment. Each unit is equipped with 20 precise power settings to ensure maximum and efficient heating of any induction compatible wok pan.\*

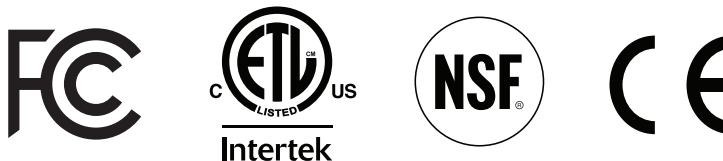
### ACCESSORIES (NOT INCLUDED)

- 14" (356 mm) Stainless Steel Wok (Part # CT-103871)
- Wok Replacement Handle (Part # CT-102881)



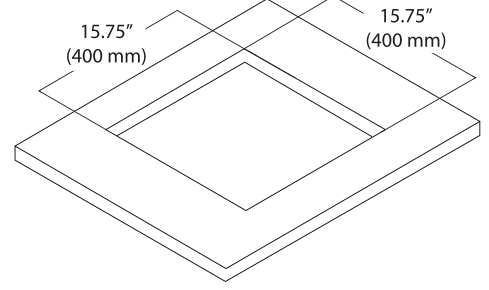
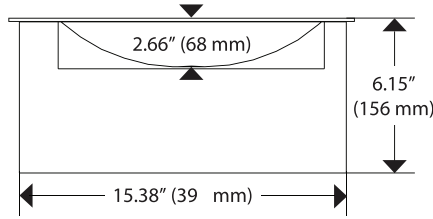
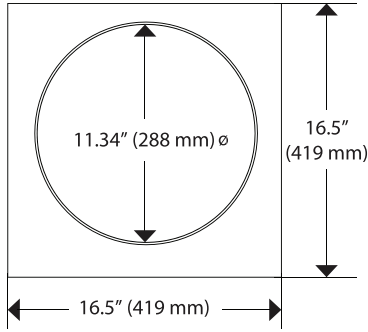
CT-103871

### CERTIFICATIONS



\*Induction cooking requires the use of induction compatible (i.e. magnetic) cookware.

It is the owner and installer's responsibility to comply with all local codes. CookTek reserves the right to make substitutions of components or change specifications without prior notice.



1

DIMENSIONS		
Full Unit Height	6.15"	156 mm
Full Unit Width	16.5"	419 mm
Housing Width	15.38"	391 mm
Full Unit Depth	16.5"	419 mm
Housing Depth	15.38"	391 mm
Bowl Width	11.34" $\varnothing$	288 mm $\varnothing$
Bowl Vertical Depth	2.66"	68 mm
Cutout Width	15.75"	400 (mm)
Cutout Height	15.75"	400 (mm)
Weight	22 lb.	9.98 kg
CLEARANCE		
Front	2"	51 mm
Sides	2"	51 mm
Rear	2"	51 mm
Below	6"	152 mm
COOLING REQUIREMENTS AND SPECIFICATIONS*		
Max Ambient Temperature	122°F	50°C
Min. Ventilation Requirements	16 in <sup>2</sup>	103 cm <sup>2</sup>
INTERNAL COOLING FAN DISPLACEMENT		
100-120 V Models	50 CFM (1.5m <sup>3</sup> /min.)	
200-240 V Models	70 CFM (2.0m <sup>3</sup> /min)	
SHIPPING INFORMATION		
Packaged Height	13"	330 mm
Packaged Width	23"	584 mm
Packaged Depth	24"	610 mm
Packaged Weight	23 lb.	10.4 kg
Item Class	250 NMFC #26710	

ELECTRICAL SPECIFICATIONS (SINGLE PHASE)			
UNITED STATES/CANADA			
MWDG1800	605301	100-120 V, 50/60 Hz, 15 A, 100-1800 W	NEMA 5-15P
MWDG2500	605401	200-240 V, 50/60 Hz, 12 A, 100-2500 W	NEMA 6-20P
MWDG3000	605501	200-240 V, 50/60 Hz, 14 A, 100-3000 W	NEMA 6-20P
MWDG3500	605601	200-240 V, 50/60 Hz, 15 A, 100-3500 W	NEMA 6-20P
UK AND SAUDI ARABIA			
MWDG2500	605402	200-240 V, 50/60 Hz, 12 A, 100-2500 W	BS1363
MWDG3000	605502	200-240 V, 50/60 Hz, 14 A, 100-3000 W	BS1363
MWDG3500	605602	200-240 V, 50/60 Hz, 15 A, 100-3500 W	IEC 309, 16A, 3-pin
INTERNATIONAL			
MWDG2500	605403	200-240 V, 50/60 Hz, 12 A, 100-2500 W	CEE 7/7 Schuko
MWDG3000	605503	200-240 V, 50/60 Hz, 14 A, 100-3000 W	CEE 7/7 Schuko
MWDG3500	605603	200-240 V, 50/60 Hz, 15 A, 100-3500 W	IEC 309, 16A, 3-pin
AUSTRALIA			
MWDG2500	605404	200-240 V, 50/60 Hz, 12 A, 100-2500 W	AS/NZS 3112:2000, 10A, 250V
MWDG3000	605504	200-240 V, 50/60 Hz, 14 A, 100-3000 W	AS/NZS 3112:2000, 15A, 250V
MWDG3500	605604	200-240 V, 50/60 Hz, 15 A, 100-3500 W	AS/NZS 3112:2000, 15A, 250V
SOUTH AFRICA			
MWDG2500	605407	200-240 V, 50/60 Hz, 12 A, 100-2500 W	BS 546, 16A, 250V
MWDG3000	605507	200-240 V, 50/60 Hz, 14 A, 100-3000 W	BS 546, 16A, 250V
MWDG3500	605607	200-240 V, 50/60 Hz, 15 A, 100-3500 W	BS 546, 16A, 250V
ISRAEL			
MWDG2500	605408	200-240 V, 50/60 Hz, 12 A, 100-2500 W	SI 32, 16A, 250V
MWDG3000	605508	200-240 V, 50/60 Hz, 14 A, 100-3000 W	SI 32, 16A, 250V
MWDG3500	605608	200-240 V, 50/60 Hz, 15 A, 100-3500 W	SI 32, 16A, 250V



NEMA 5-15P



AS/NZS 3112:2000, 10A, 250V



NEMA 6-20P



AS/NZS 3112:2000, 15A, 250V



BS1363



BS 546, 16A, 250V



IEC 309, 16A, 3-pin



CEE 7/7 Schuko



SI 32, 16A, 250V

\* Adequate cabinet ventilation should be provided for all drop-in models to prevent overheating of unit



Dedicated circuit required for each installation

© 2017 CookTek®

**UK & Ireland Distributor**



**MCS Technical Products Ltd Swindon, SN5 7YT, UK**

**+44 (0)1793 538308**

**sales@mcstechproducts.co.uk**

**www.mcstechproducts.co.uk**

**Global Operations**

2801 Trade Center Drive / Carrollton, Texas 75007 USA

International: +1 214.379.6000

www.cooktek.com